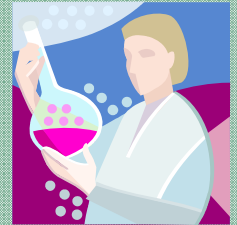


March 2011



Philadelphia Section AIHA Newsletter



March 2011 Half-Day Professional Development Course

“Pharmaceutical EHS Forum”

Please plan on joining us on Thursday, March 24th for a half-day Professional Development Course, “*Pharmaceutical EHS Forum*”, being presented at the Villanova Conference Center (Radnor, PA).

Presentations from our speakers will address issues of interest to both those in the pharmaceutical industry, as well as general EHS practitioners.

Presentation topics will include control banding, industrial containment, and the issue of pharmaceuticals in the environment, a subject that has been in the news of late.

The PDC includes a continental breakfast and buffet lunch.

ABIH CM points have been applied for.

Philadelphia Section AIHA

March 2011 Half-Day PDC

“Pharmaceutical EHS Forum”

Thursday, March 24th, 2011

Villanova Conference Center
601 County Line Road Radnor, PA

Agenda

7:45 AM	Registration/Networking Opportunity/Continental Breakfast
8:15 AM	Welcome/Announcements/Introductions
8:30 AM	<i>“Control Banding: Past, Present and Future”</i> : Bruce D. Naumann (Merck)
9:30 AM	Break
9:45 AM	<i>“A Practical Approach To Dust Control”</i> : Hari Floura (Floura LLC)
10:45 AM	Break
11:00 AM	<i>“Pharmaceuticals In The Environment”</i> : Christopher A. Smith (Smithers Viscient)
12:00 PM	Question and Answer Session with Speakers/Closing Comments
12:15 PM	Buffet Lunch

Cost: Current Philadelphia Section AIHA Members*: **\$75**
Non-Members: **\$85**

Meeting fee includes continental breakfast and buffet lunch

*- to take advantage of the discounted member rate, you must be a current dues-paying member of the Local Section.

Payment for this course **MUST** be made at the door on the day of the event. No advance payments will be accepted. Payment must be made via cash or check **ONLY** (no credit cards or PO's will be accepted, and we cannot invoice for the course fee... **NO EXCEPTIONS**).

To register, please send an email with your name and company affiliation to register@philaaaha.com before Noon on Monday, March 21st.

ABIH CM points have been applied for.

601 County Line Road
Radnor, PA 19087
Phone: 610.523.1776
Fax: 610.523.1777

Driving Directions to The Villanova Conference Center

Using GPS: If you are using a GPS to navigate to the Villanova Conference Center, please use 629 County Line Road, Radnor, PA 19087 as the address, or enter Latitude 40.05 and Longitude -75.35.

From Philadelphia International Airport: When leaving the airport, follow signs for I-95 South. Take I-95 South to Rt. 476 North (Plymouth Meeting.) Follow Rt. 476 North to Exit 13 (St. David's/Villanova.) At the bottom of the exit ramp, proceed straight at the traffic light onto King of Prussia Road. Follow King of Prussia Road to the 2nd traffic light and turn right onto Matsonford Road. Follow Matsonford Road approximately half a mile and turn right into the Matsonford Gate entrance to The Villanova Conference Center. (marked by blue signs on the stone gates).

From the North: Take the New Jersey Turnpike to Exit 6 (Pennsylvania Turnpike Exit.) Follow the Pennsylvania Turnpike to Route 476 South towards Philadelphia/Chester, and bear left at the fork. Take 476 South to Exit 13 (St. David's/ Villanova). At the bottom of the exit ramp, turn right onto Rt. 30 East (Lancaster Avenue.) At the 1st traffic light turn left onto King of Prussia Road. Follow King of Prussia Road to the 2nd traffic light turn right onto Matsonford Road. Follow Matsonford Road approximately half a mile and turn right into the Matsonford Gate entrance to The Villanova Conference Center. (marked by blue signs on the stone gates).

From the South: Take I-95 North to Route 476 North. Take Route 476 North to Exit 13 (St. David's/ Villanova.) At the bottom of the exit ramp, proceed straight at the traffic light onto King of Prussia Road. Follow King of Prussia Road to the 2nd traffic light and turn right onto Matsonford Road. Follow Matsonford Road approximately half a mile and turn right into the Matsonford Gate entrance to The Villanova Conference Center. (marked by blue signs on the stone gates).

From the East (Philadelphia/ 30th Street Station): Take I-76 West to Exit 330 (Gulph Mills.) At the bottom of the exit ramp, turn left then turn left again at the stop sign, following signs for Route 320 South. At the traffic light at the intersection for 320 South, turn left. Follow 320 South (South Gulph Road) through two traffic lights, just after you pass the Sunoco Station, turn right before the third traffic light onto Matsonford Road. Proceed on Matsonford Road for half a mile and turn left at the 1st traffic light onto County Line Road. The Conference Center is the second entrance on the right (marked by blue signs on the stone gates).

From the West: Take the Pennsylvania Turnpike to I-76 East towards Philadelphia. Take I-76 East to Exit 330 (Gulph Mills.) At the bottom of the exit ramp, turn right onto Rt. 320 South. Follow 320 South (South Gulph Road) through two traffic lights, just after you pass the Sunoco Station, turn right before the third traffic light onto Matsonford Road. Proceed on Matsonford Road for half a mile and turn left at the 1st traffic light onto County Line Road. The Conference Center is the second entrance on the right (marked by blue signs on the stone gates).

Control Banding: Past, Present and Future: Bruce D. Naumann (Merck)

"Control Banding" is a relatively new term, but the concept of categorizing compounds based on their toxicological properties, and developing control strategies for these categories of compounds, has been around for years. While much of the early work in this area emanated from the pharmaceutical industry, the approach has found utility in many industries and laboratory settings. The criteria used to assign compounds to occupational exposure bands (OEBs) focuses on acute and chronic endpoints, including reproductive and carcinogenic effects, but also reflects potency, severity of effect and dose-response. These are the same considerations used to set numerical occupational exposure limits (OELs). The engineering controls and handling practices developed to meet OELs are the very ones relied upon to define control banding recommendations used in COSHH Essentials and the ILO Tool Kit. One key need, now and in the future, is for Industrial Hygienists to continue to conduct verification monitoring to provide a firm foundation for these performance-based approaches for controlling worker exposures.

Dr. Bruce Naumann is a Senior Principal Scientist and Director of Occupational and Environmental Toxicology at Merck. In this role he provides leadership and technical guidance to the Company on a broad range of occupational, environmental and industrial toxicology issues. He chairs Merck's Industrial Toxicology Advisory Committee which sets formal health-based exposure standards to support worker protection and product quality. Bruce received his Ph.D. from New York University and is certified by the American Board of Toxicology. He has over 25 years of experience as an industrial toxicologist in the pharmaceutical industry and his publications have focused on improving the use of science in risk assessment. Bruce is a member of the ACGIH Chemical Substances TLV Committee and recently received the 2010 Herbert E. Stokinger Award.

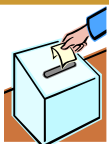


A Practical Approach To Dust Control: Hari Floura (Floura LLC)

All manufacturing industries, at some point, will deal with dust generating processes that can be potentially hazardous to worker health. This presentation will discuss:

- Assessing and understanding the potential risk
- The effectiveness of Personnel Protective Equipment (PPE) and pairing PPE with engineering controls
- The technologies available to control risk
- Practical cost effective examples for safely handling, containing and minimizing exposure.

Hari Floura is the President of Floura LLC. Since obtaining his degree in Industrial Design Engineering BA (Hons) in 1988, Hari Floura has worked exclusively in the field of Containment Technology within the pharmaceutical industry. During this time, he established and managed the USA offices of Applied Containment Engineering (ACE), in the position of President of Operations. In addition Hari has provided consultancy to many major Pharmaceutical Companies with respect to their containment guidelines, facility and containment system designs. He is also a member and regular presenter for several industry organizations including the International Society of Pharmaceutical Engineers and contributed to the ISPE Good Practice Guide – Assessing the Particulate Containment Performance of Pharmaceutical Equipment (APCPPE). Hari is also currently involved in the revision of the ISPE APPCPPE guide as a subject leader and member of the steering committee involved in the revision of this document.



2011-2012 Local Section Elections



We are looking for candidates for several positions on the Executive Board of the Philadelphia Section AIHA for the 2011-2012 term. These positions are President-Elect, Treasurer and 2 Directors.

We are looking for energetic persons who have some spare time to donate, to help to plan and present the Section's educational programs.

If you would be interested in serving on the Executive Board, please send an email to nominations@philaaaha.com, and you will be contacted with additional information.

Dues-paying members of the Local Section will receive an email in late April/early May with a link to on-line voting.

Pharmaceuticals In The Environment: Christopher A. Smith
(Smithers Viscient)

A brief overview of Pharmaceuticals in the Environment (PiE) will be provided, including an outline of the contributing factors, public perception and opportunities to mitigate potential risk scenarios. A summary of a Product Stewardship methodology will be used to illustrate a product life cycle approach from hazard evaluation through exposure evaluations, risk identification and action steps (e.g. Is Risk Management Adequate, Are Business Decision To Proceed Required?). In this presentation an overview of examples from environmental guidance tools, the use of modeling, due diligence (registering and product review, Epidemiology, social response), manufacturing practices will be presented.

Christopher Smith is a Senior Consultant at Smithers Viscient, and hold degrees in Environmental Chemistry, Policy and a Masters of Environmental Management. Chris has recently joined Smithers Viscient from Pfizer Inc. As an environmental chemist / toxicologist Chris has extensive expertise in environmental risk and safety assessments. With 16 years of experience in providing expert technical analysis and developing risk assessment and environmental monitoring programs Chris now heads up Smithers Viscient North America office and as well as REACH consultancy. He is focusing on providing services for Environmental and Manufacturing Risk Assessments while building on Smithers Viscient reputation as providers of innovative solutions.



PHILADELPHIA SECTION AIHA
PO Box 126 • ROYERSFORD, PA 19468
MAIL@PHILAAIHA.COM