



AIHA Philadelphia Section AIHA Newsletter

Protecting Worker Health

November Breakfast/Lunch Meeting Tuesday, November 18th “Combustible Dust”

Can you identify what dust conditions may create a combustible atmosphere?

How do you test to determine whether your process materials are combustible?

What kinds of measures can you use to control combustible dust situations?

What is the OSHA Combustible Dust National Emphasis Program (NEP) and are you prepared for an OSHA inspection?

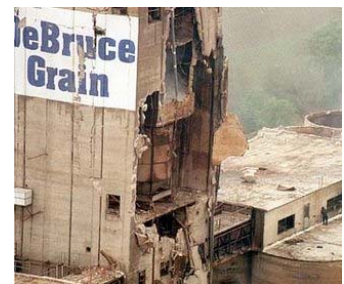
These and other anticipation, recognition, evaluation, and control questions will be discussed by renowned dust explosion expert **Dr. Vahid Ebadat** and OSHA Assistant Area Director **Matt Bole** at the Philadelphia Section AIHA's November breakfast/lunch meeting, “Combustible Dust”, being held on Tuesday, November 18th, 2008 at the Villanova Conference Center (Radnor, PA).

Please plan on joining us to learn more about this timely topic.

CM points for this meeting have been applied for.



**Please pre-register
early, as this meeting
is likely to fill up fast!**



2009 Local Section Dues: See Last Page

Philadelphia Section AIHA

Tuesday, November 18, 2008 Breakfast/Lunch Meeting

"Combustible Dust"

Agenda

7:30 am – 8:30 am	Registration/Networking/Continental Breakfast
8:30 am – 10:00 am	Combustible Dust – Dr. Vahid Ebadat <ul style="list-style-type: none">- Conditions for Dust Explosions- Recent Explosions in the United States- Testing Materials- Measures to Control Dusts
10:00 am – 10:15 am	Break
10:15 am – 11:45 am	Combustible Dust (continued) – Dr. Ebadat
11:45 am – 12:30 pm	Buffet Lunch
12:30 pm – 1: 30 pm	OSHA – Matt Bole <ul style="list-style-type: none">- Combustible Dust National Emphasis Program- Regulatory Status- Inspections
1:30 pm – 2:00 pm	Questions & Wrap-up

Price: \$75 (includes continental breakfast and buffet lunch)

All payments to be made at the door (cash or check only, checks payable to "Philadelphia Section AIHA")

Due to the anticipated popularity of this meeting, and limited meeting space, pre-registration for this meeting is MANDATORY. Registration will end, without notice, when all available spaces have been filled.

To register, please send an email, with your name and company affiliation) to register@philaaaha.com.

The deadline for pre-registration is Friday, November 14th

The Villanova Conference Center

601 County Line Road
Radnor, PA 19087
Phone: 610.523.1778
Fax: 610.523.1777

Prepare Yourself To Be Spoiled!

Driving Directions to The Villanova Conference Center

From Philadelphia International Airport:

The Villanova Conference Center is located 18 miles from Philadelphia International Airport.

When leaving the airport, follow signs for I-95 South. Take I-95 South to Rt. 476 North (Plymouth Meeting.) Follow Rt. 476 North to Exit 13 (St. David's/Villanova.) At the bottom of the exit ramp, proceed straight at the traffic light onto King of Prussia Road. Follow King of Prussia Road to the 2nd traffic light and turn right onto Matsonford Road. Follow Matsonford Road approximately half a mile and turn right into the Matsonford Gate entrance to The Villanova Conference Center. (marked by blue signs on the stone gates.)

From the North:

Take the New Jersey Turnpike to Exit 6 (Pennsylvania Turnpike Exit.) Follow the Pennsylvania Turnpike to Route 476 South towards Philadelphia/Chester, and bear left at the fork. Take 476 South to Exit 13 (St. David's/ Villanova). At the bottom of the exit ramp, turn right onto Rt. 30 East (Lancaster Avenue.) At the 1st traffic light turn left onto King of Prussia Road. Follow King of Prussia Road to the 2nd traffic light turn right onto Matsonford Road. Follow Matsonford Road approximately half a mile and turn right into the Matsonford Gate entrance to The Villanova Conference Center. (marked by blue signs on the stone gates.)

From the South:

Take I-95 North to Route 476 North. Take Route 476 North to Exit 13 (St. David's/Villanova.) At the bottom of the exit ramp, proceed straight at the traffic light onto King of Prussia Road. Follow King of Prussia Road to the 2nd traffic light and turn right onto Matsonford Road. Follow Matsonford Road approximately half a mile and turn right into the Matsonford Gate entrance to The Villanova Conference Center. (marked by blue signs on the stone gates.)

From the East (Philadelphia/ 30th Street Station):

Take I-76 West to Exit 330 (Gulph Mills.) At the bottom of the exit ramp, turn left then turn left again at the stop sign, following signs for Route 320 South. At the traffic light at the intersection for 320 South, turn left. Follow 320 South (South Gulph Road) through two traffic lights, just after you pass the Sunoco Station, turn right before the third traffic light onto Matsonford Road. Proceed on Matsonford Road for half a mile and turn left at the 1st traffic light onto County Line Road. The Conference Center is the second entrance on the right (marked by blue signs on the stone gates)

From the West:

Take the Pennsylvania Turnpike to I-76 East towards Philadelphia. Take I-76 East to Exit 330 (Gulph Mills.) At the bottom of the exit ramp, turn right onto Rt. 320 South. Follow 320 South (South Gulph Road) through two traffic lights, just after you pass the Sunoco Station, turn right before the third traffic light onto Matsonford Road. Proceed on Matsonford Road for half a mile and turn left at the 1st traffic light onto County Line Road. The Conference Center is the second entrance on the right (marked by blue signs on the stone gates.)

SPEAKERS

Dr. Vahid Ebadat

Vahid Ebadat, Ph.D., M.Inst.P, MIEE, C.Eng., C.Phys. is the CEO of Chilworth Technology, Inc. He has worked extensively as a process and operational hazards consultant for the chemical, pharmaceutical and food industries. Dr. Ebadat is a regular speaker at training courses on gas and vapor flammability, dust explosions, and controlling electrostatic hazards. He is a member of NFPA 77 Technical Committee on Static Electricity, NFPA 654 Standard for the Prevention of Fire and Dust Explosions from the Manufacturing, Processing, and Handling of Combustible Particular Solids and ASTM E27 Committee on Hazard Potential of Chemicals. Dr. Ebadat's research has culminated in the publication of numerous technical papers and articles.

Matt Bole

Matt Bole is an Assistant Area Director for the US Department of Labor's Occupational Safety and Health Administration, working in the Harrisburg Area Office. The Harrisburg office covers workplaces in the central 14 counties of Pennsylvania.

Mr. Bole is a member of several occupational health associations, including the American Industrial Hygiene Association and the American Conference of Governmental Industrial Hygienists.

Mr. Bole had been employed with OSHA 1978 to 1981, and returned to OSHA in 1985. Prior to returning to OSHA, Mr. Bole was employed as an Industrial Hygienist for the Department of the Army.

Mr. Bole is a native of Erie, Pennsylvania. He attended Mercyhurst College, where he received his undergraduate degree in Biology.

Upcoming Meeting Information

Thursday, December 4th: NJ Section AIHA Professional Development Courses (www.njaiha.org)

Friday, December 5th: *Northeast Regional Industrial Hygiene Conference and Exposition* (Hyatt Regency Hotel, New Brunswick, NJ) (www.metnyaiha.org)

February (date to be announced): *"Global Harmonization/REACH"*

2009 Philadelphia Section AIHA Dues

Once again, it's time to support your Local Section by making your annual dues payment. To align with National AIHA's dues, the Philadelphia Section AIHA has changed the timing of dues, with collection of dues (covering January-December 2009) taking place now through January 31st, 2009.

Your \$20 annual dues payment helps to support the activities of the Philadelphia Section AIHA. Plans are in discussion for additional benefits for paid members, including discounts on meeting costs, preferred pre-registration, and a special "members only" event.

Dues can be paid three different ways:

- **AIHA National Dues Bill**: You can pay your Local Section dues on your AIHA National dues bill by writing in your dues payment in the space provided on the front of the dues notice, and selecting "Philadelphia" as your Local Section on the back of the notice;
- By **cash or check** via US Mail, by visiting the "Membership" page of the [Philadelphia Section AIHA web site](#) and printing out a membership form; or
- By **credit card** (using PayPal). To pay via credit card, please click on the "2009 Dues" button on the [Philadelphia Section AIHA web site](#).

Please be sure to make your dues payment by **January 31st, 2009**.



PHILADELPHIA SECTION AIHA

PO Box 126

ROYERSFORD, PA 19468

MAIL@PHILAAIHA.COM